

PART OF THE NE. 1/4, OF SECTION 19, & PART OF THE NW. 1/4, OF SECTION 20 T.6N., R.2W., S.L.B. & M.

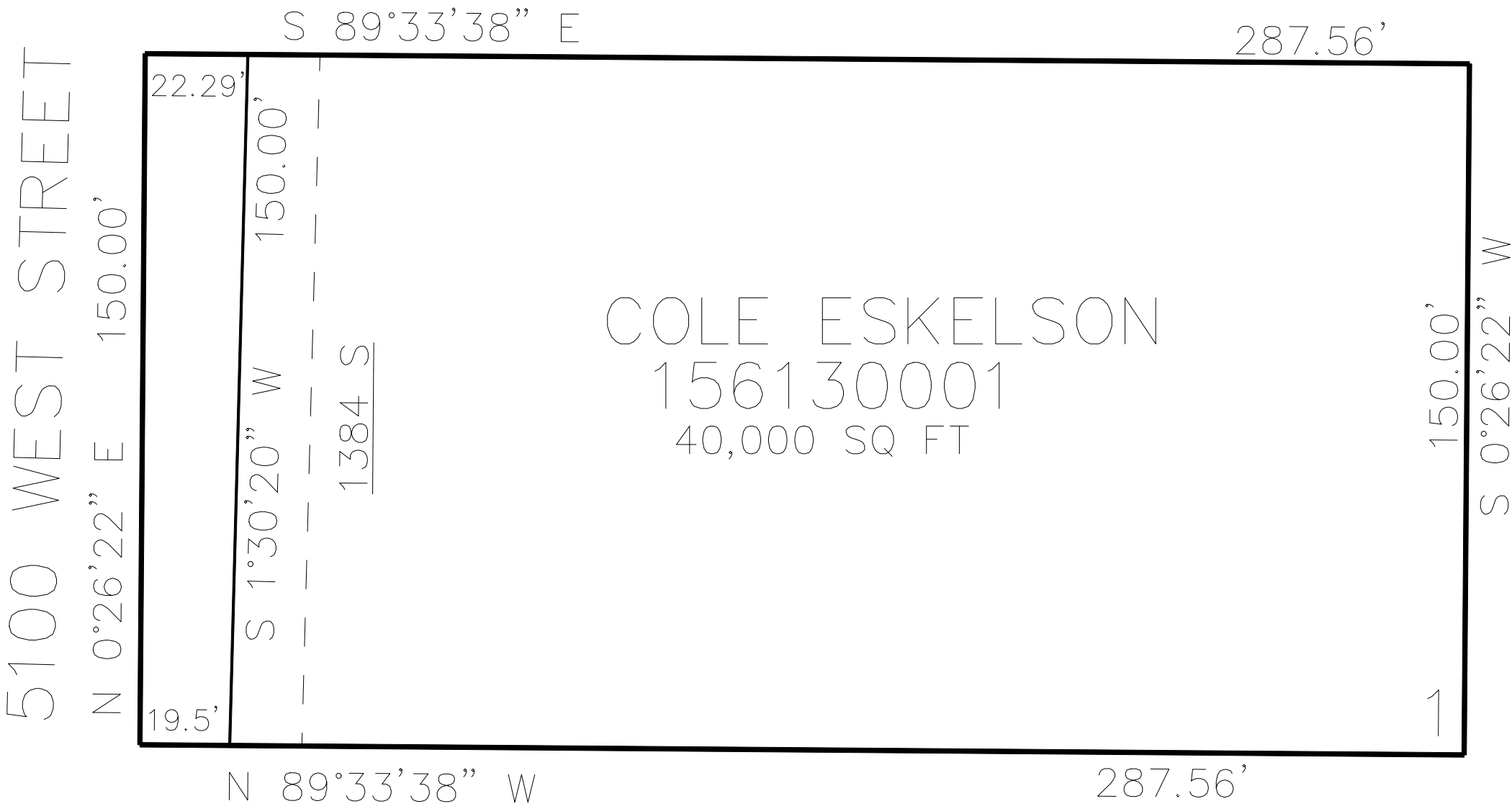
SUNSET FIELDS SUBDIVISION

IN WEBER COUNTY

TAXING UNIT: 516

SCALE 1" = 30'

SEE PAGE 54



SEE PAGE 54

10' UTILITY & DRAINAGE EASEMENTS EACH
SIDE OF PROPERTY LINES AS INDICATED
BY DASHED LINES EXCEPT AS OTHERWISE
SHOWN.

FOR COMPLETE ENG DATA SEE
ORIGINAL DEDICATION PLAT IN
BOOK 80, PAGE 22 OF RECORDS.